



BIH
BRITISH INSTITUTE OF HOMEOPATHY
INTERNATIONAL

PROSPECTUS 2020

580 Zion Road Egg Harbor Township
New Jersey, U.S.A. 08234

Telephone: 1-609-927-5660

Toll Free: 1-800-498-6323

Fax No.: 1-609-653-1289

The British Institute of Homeopathy (BIH) is committed to equal opportunity, a culture of inclusion and an environment free from discrimination and harassment in its educational programs and employment. Equal opportunity is offered to all students, faculty and staff, including applicants for admission and/or employment, consultants/contractors for activities or services, participants in programs and volunteers. The BIH complies with applicable laws and regulations governing equal opportunity in the workplace and in educational activities.

The BIH prohibits discrimination, including discriminatory harassment, on the basis of race, ethnicity, ancestry, color, religion, gender, sexual orientation, gender identity, national origin, age, disability or veteran status in its programs, activities, employment and admissions. This prohibition applies to faculty, staff, students and all other members of the BIH community, including affiliates, invitees and guests.

“The mission of the British Institute of Homeopathy is to provide an outstanding classical homeopathic education to students and professionals, live and online, through distance education.”

Table of Contents

About the British Institute of Homeopathy	5
Legacy	5
Purpose, Values, Vision and Goals	6
Statement of Purpose	6
Vision	6
Core Values	6
Goals	6
Director of Education	6
Faculty and Administration	7
Members of the Faculty	7
Administrative Staff	7
Distance Learning	7
Technology Orientation	8
Course Syllabi	8
Program and Courses	8
Program and Course Overview	8
Program Goals	9
Program Objectives	9
Program Components	10
Course of Study	10
Clinical Training in Homeopathy	10
Application and Enrollment Procedure	11
Application	11
English Proficiency Requirement	12
Denial of Application	13
Enrollment/Registration	13
Student Status Guidelines	14
Signatures	14
Proctored Examinations	14
Grading System	14
Grading Criteria	15
Certificates of Completion	15
Prior Studies in Homeopathy	15
The requisites are the following:	16
ADA Accommodations	16
Payment	16
General Information	17
Integrity	17
Student Rights and Responsibilities	18
Transcripts	18
Intellectual Property	18
Copyright	19
Consistency of Study	19
Inactivity	19
Leave/Extension	19
Newsletters	19

“The mission of the British Institute of Homeopathy is to provide an outstanding classical homeopathic education to students and professionals, live and online, through distance education. ”

Samuel Hahnemann Award	19
Student Grievances	20
Updates	20
Tuition Refund Policy	20
Courses of Study	21
HF101 - Introduction to Homeopathy	21
HF101A – Clinical Homeopathy for Healthcare Professionals	21
HF102 - Foundations of Hahnemannian Homeopathy	22
HIP201 - Homeopathy in Practice (Advanced Case Taking & Repertorization)	22
CT202 - Clinical Training in Homeopathy	23
HAH301 - Advanced Studies in Homeopathy	24
HP101 – Fundamentals of Homeopathic Pharmacy	24
HP102 - Foundations of Homeopathic Pharmacy	25
HV101 – Fundamentals of Veterinary Homeopathy	26
HV102 - Foundations of Veterinary Homeopathy	26
HD101 - Foundations of Dental Homeopathy	27
HW201 - Women’s Health Module I (Midwives) (Pregnancy-Childbirth)	28
HW202 – Comprehensive Studies in Women’s Health & Homeopathy	29
HRB101 - Foundations of Herbology and Herbal Medicine	29
NH101 - Nutrition and Herbology	30
CN302 - Foundations of Clinical Nutrition	30
NUT101 – Introduction to Nutrition	31
NBR201 - Fundamentals of Nutrition & Biochemic Remedies	31
AP201 – Human Anatomy and Physiology	32
AP202 – Human Pathology and the Nature of Disease	32
FES101 – Bach Flower Practitioner Course	33
GEM201 - Gemmotherapy	33
FERPA Law	34
Contact Information	35

“The mission of the British Institute of Homeopathy is to provide an outstanding classical homeopathic education to students and professionals, live and online, through distance education. ”

About the British Institute of Homeopathy

The British Institute of Homeopathy (BIH) is the leader in online homeopathic education and training since 1987. Our distance learning courses provide each student with an excellent foundation of knowledge in Classical Hahnemannian Homeopathy. The Institute has graduated thousands of students from many countries and regions globally, including the USA, Australia, Canada, India, United Kingdom, Spain, Greece, Singapore, Cyprus, China, Japan and South America. BIH graduates have become successful professionals all over the world, active in client practice, research, writing and teaching.

The British Institute of Homeopathy of Homeopathy is authorized by the New Jersey Department of Labor and WorkForce Development as a provider of vocational education.

The BIH has been accepted as a candidate for accreditation by the Accreditation Commission for Homeopathic Education in North America (ACHENA). BIH has demonstrated that it has met eligibility requirements and its curriculum is generally consistent with ACHENA educational standards. Schools that are candidates for accreditation are actively engaged in self- study and preparation for a peer review site visit. While BIH cannot guarantee that the school will be accredited, it is actively pursuing accreditation and believes that our program is consistent with ACHENA standards. Updates to BIH's status with ACHENA can be found on the [ACHENA website](#).

The British Institute of Homeopathy is accredited as a Continuing Medical Education Provider for the Arizona Homeopathic and Integrative Medical Association (AHIMA). The BIH course satisfies the 40 hour requirement that qualifies physicians to sit for the Homeopathic licensure examination in Arizona.

Our courses can be used towards meeting the training prerequisites and continuing education requirements for certification in many countries.

Legacy

Dr. Trevor Cook founded the British Institute of Homeopathy Ltd. (BIH) in the United Kingdom in 1987. Since 2010, all branches of the British Institute have been united as The British Institute of Homeopathy under the directorship of Maria Bohle, Ph.D., DHM, CCH, RSHom (NA), FACACN. Since that time the overall purpose of the BIH has been to advance the homeopathic profession by educating individuals to become qualified homeopathic professionals, thereby assisting the general public in choosing appropriately qualified practitioners. Accordingly, there has been an ongoing commitment to assess, analyze, plan and further develop BIH courses and programs.

"The mission of the British Institute of Homeopathy is to provide an outstanding classical homeopathic education to students and professionals, live and online, through distance education. "

Purpose, Values, Vision and Goals

Statement of Purpose

The purpose of the British Institute is to advance the homeopathic profession by educating individuals and to assist the general public in choosing appropriate qualified homeopaths.

Vision

Improvement in the quality of homeopathic education globally.

Improving health outcomes for consumers by graduating CHC certified eligible practitioners.

Core Values

Distance learning as an effective approach to homeopathic education with online access for all.

To support and sustain the future growth of homeopathic practitioners through live and online education worldwide.

To offer resources and support to students throughout their homeopathic educational experience.

Goals

To advance the profession of classical homeopathy by educating individuals who become certified homeopathic professionals.

Provide quality classical homeopathic education through live, online and distance learning to individuals worldwide.

Director of Education

Maria Bohle, Ph.D., CCH, RSHom, DCN, DHM has been Director of the British Institute of Homeopathy USA office since 2001. She began her career in the Institute as an Instructor in 1995 and loves teaching and training tomorrow's homeopaths. Maria is a renowned herbalist and a professional homeopath in South Jersey where she helped adults and children deal with and overcome issues such as Post Emotional Trauma, autoimmune disorders and nutritional imbalances.

"The mission of the British Institute of Homeopathy is to provide an outstanding classical homeopathic education to students and professionals, live and online, through distance education. "

Faculty and Administration

Members of the Faculty

	Courses of Instructions
Maria Bohle, CCH	All homeopathic courses
Ann McKay, CCH	All homeopathic courses
Raka Nandra, RSHom (UK)	All homeopathic course, Clinical Training
Kathleen Hendrickson, CCH	Introduction to Homeopathy
Kelly Bracamontes, CCH	Intro to Homeopathy, Foundations courses
Ashok Rajguru, DiHom (Pract), DHM (UK)	Foundations courses, Advanced Studies
Jerry Kantor, CCH	Homeopathy in Practice, Clinical Training
Inna Sarumian, CCH	Homeopathy in Practice, Advanced Studies
Cora Ibarra, M.D., DHM(UK)	Human Sciences

Administrative Staff

Maria Bohle	Chief Executive Officer	mbohle@bihint.com
Jack Eck	Administrator	jeck@bihint.com
Ashli Berhow	Administrative Assistant	aberhow@bihint.com
Brittany Velez-Dodd	Registrar	registrar@bihint.com

Distance Learning

BIH chose to provide education services through distance learning to accomplish its purpose in advancing homeopathic profession by educating individuals and to assist the general public in choosing appropriate qualified homeopaths. The BIH offers Distance Education, with open enrollment every other month throughout the year.

Program courses are provided through Moodle, the Learning Management System which is a web-accessible software application that provides for the administration of course content, delivery of assessments, communication and collaboration between students and faculty, offering the ability to track grades and other relevant performance data. Moodle has all materials, assignments, quizzes, discussion forum questions, exams, links to resources for both students and faculty to interact throughout the course through both synchronous and asynchronous interaction. Course materials may be presented by faculty or a content area expert via the following modalities:

- Moodle
- Assigned readings from the text and other homeopathic literature
- Discussion Forum
- Individual and Group Collaborative Sessions
- Multi-Media such as YouTube video
- Pre-recorded sessions presented with educational technology
- Other material as deemed necessary by the faculty member

“The mission of the British Institute of Homeopathy is to provide an outstanding classical homeopathic education to students and professionals, live and online, through distance education.”

All assignments and examinations submitted must be the student's own work. Quotations and material from other sources must be correctly cited with footnotes and bibliography. All sources must be cited, using [APA format](#).

The BIH uses a web conferencing program to maintain synchronous work with students for lectures and clinical training. Clinical training is offered through HIPAA protected **Zoom** meetings every other month, January, March, May, July, September and November. Students may attend clinics in person at the BIH office in New Jersey or through Zoom, a process that creates a community for the students. This venue requires students to download the Zoom application and enter with a specific password. Any challenges with entering the clinic through Zoom should notify the BIH office and the clinical supervisor.

Each course has a list of required and recommended supplemental books or other materials that accompany the course material. These materials are not included in the course cost and must be obtained independently by the student at the student's own expense unless otherwise specified. Upon registration, BIH will provide a list of online suppliers who may at their own discretion choose to offer a discount to BIH students. The booklist for each course is included in the course materials and available upon request.

[Technology Orientation](#)

Students are required to take a Moodle Tutorial Training prior to having access to their course(s). The Moodle Tutorial Training covers the course method of instruction that includes: information about the course methods of instruction and the course handbook that includes syllabus, course material, booklist, instructions for faculty and student interaction, grading rubrics for assignments and class discussions, and proctoring information needed by the student to sit for the two examinations. This is located on Moodle through secure password and has access to all the above-mentioned information.

[Course Syllabi](#)

Each course syllabus is located in the 'announcements' tab in Moodle. The boundaries related to communication, course deadlines, dealing with technology problems, netiquette, and online participation is outlined in the syllabus.

[Program and Courses](#)

[Program and Course Overview](#)

The BIH is dedicated to teaching the tenets, philosophy and methodology of Samuel Hahnemann.

"The mission of the British Institute of Homeopathy is to provide an outstanding classical homeopathic education to students and professionals, live and online, through distance education. "

The BIH Professional Homeopathic Practitioner Program is intended for students who are seeking to become professional practitioners and who would like to work within a private practice, integrative healthcare setting or other health care setting. The length of the full time PHPP is three-years, with a Fast Track option of 2 years and a part-time component of up to 6 years. All enrollment options offer BIH students the requisite 500 hours (36 credits) of didactic study and 500 hours (12.8 credits) clinical training to qualify for The Council for Homeopathic Certification (CHC) examination as Classical Certified Homeopath (CCH).

Program Goals

Our goal is to prepare our students to be practice-focused homeopathic leaders who improve the quality of life and health outcomes for those seeking homeopathic healthcare worldwide.

Program Objectives

The BIH objective is to produce qualified professional and certified classical homeopaths who are competent to apply and integrate the discipline of homeopathy in their professional practice with in-depth classical homeopathic expertise.

The Professional Homeopathic Practitioner Program plus verification of completion of two college level courses in Anatomy/Physiology and Pathology* meets all the prerequisites to take the certification exam offered by the Council for Homeopathic Certification (CHC). The CHC holds national accreditation as a certification organization in North America.

*Health Sciences are not included as part of the homeopathic program. These courses are required for CHC eligibility to take the exam. These courses may be taken with the BIH or through a local college.

Please note: Courses in Health Sciences are electives in the BIH Program; however, proof of having completed these courses elsewhere is mandatory for graduation from the BIH Program and for eligibility to take the CHC exam.

Certificates issued by the BIH are a recognition of successful completion of a course or program and does not constitute a license to practice.

“The mission of the British Institute of Homeopathy is to provide an outstanding classical homeopathic education to students and professionals, live and online, through distance education.”

Program Components

Course of Study

The BIH's Professional Homeopathic Practitioner Program is the major education program teaching classical homeopathy. The Program is comprised of four courses that must be taken sequentially:

HF102	Foundations of Hahnemannian Homeopathy	200 hours/13 credits
HIP201	Homeopathy in Practice	100 hours/7credits
CT202	Clinical Training in Homeopathy	500 hours/12.8credits
HAH301	Advanced studies in Homeopathy	250 hours/16 credits

Clinical Training in Homeopathy

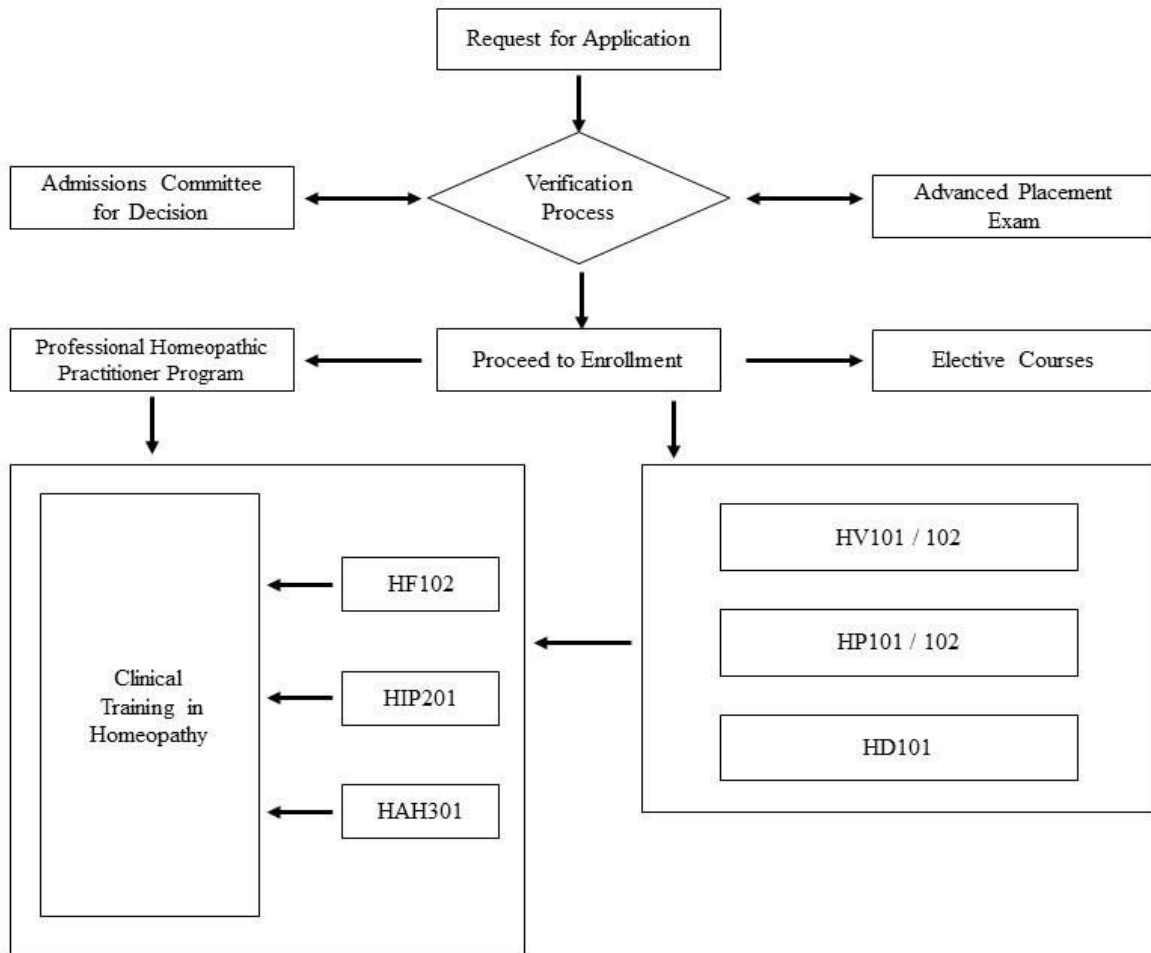
The objectives of the BIH Clinic are to provide students with an instrument for assimilation of theory, principles, philosophy and academic knowledge of homeopathy into practice; to prepare students for independent practice. In this way students can develop homeopathically through a supervised process that allows for creating a practitioner mindset where identification process that allows for creating a practitioner mindset where identification of strengths and weaknesses, self-reflection, and ways to develop professionally are fostered.

Training hours in case taking, case analysis, case management, client management, homeopathic pharmacy and posology are all necessary for a well rounded clinical education. Supervised clinical training is strongly emphasized as the best method of learning the practical skills needed in the consulting room.

Ideally, homeopathic clinical training within a homeopathic program must run concurrently with theoretical education, thus allowing the student to demonstrate understanding of theory and methodology as theoretical learning proceeds.

“The mission of the British Institute of Homeopathy is to provide an outstanding classical homeopathic education to students and professionals, live and online, through distance education. ”

BIH Application and Enrollment Process



Application and Enrollment Procedure

Students may register at any time for any of the courses offered through The British Institute. Students must also submit information documenting their highest level of education. Courses under the Professional Homeopathic Practitioner Program

Application

All prospective students are reviewed by the Registrar to determine the applicant's eligibility requirements are met. A letter of intent must accompany the application. The letter of intent should address the applicant's willingness to apply themselves to the rigor of the courses of study required to become a successful homeopathic student and/or future professional homeopath. The Application Form can be found on the website at www.bihint.com to apply.

"The mission of the British Institute of Homeopathy is to provide an outstanding classical homeopathic education to students and professionals, live and online, through distance education."

An application must include all of the following:

- A completed application form
- All required education documentation
- Letter of intent with reasons for enrolling in the program
- Photo ID documentation
- The non-refundable application fee of \$75.00 paid in full with the application.

English Proficiency Requirement

Applicants to the program must be competent in spoken and written English. If the completed application or communication with the school indicate that the applicant's English is not sufficient to successfully complete the program the applicant must submit scores of at least 500 on the Test of English as a Foreign Language (TOEFL) and at least the currently reported mean score on the Test of Spoken English (TSE) to be admitted to the Professional Practitioner Program.

Required for Verification of Education Prerequisite for admission to courses or programs

*Scanned copies of official transcripts are required as documentation:

1. Associates Degree or higher education that include all courses taken and grades received from each program of study
2. If a degree has been awarded, the official transcript with institutional Registrar's stamp must indicate the title of the degree and the date it was conferred.
3. Official transcript from Military or Corporate training, through the American Council on Education in the National Guide to Educational Credit for Training Programs and the Guide to the Evaluation of Educational Experience in the Armed Services.
4. Official results of standardized test results from standardized testing corporation
5. If the transcript is not in English, both official transcripts in English and in the applicant's native language must be provided. If the Institution does not provide the copy in English, a certified, verbatim English translation from a certified translation service, such as Certified Translation Services (www.daytranslations.com), Educational Credential Evaluators (ece.org), or World Educational Services (wes.org) is required.

"The mission of the British Institute of Homeopathy is to provide an outstanding classical homeopathic education to students and professionals, live and online, through distance education."

If an applicant does not have the required prerequisites for admission to the Professional Program, he/she is required to take the BIH course, entitled “Introduction to Homeopathy” This course is also open to the public as a 30 hour (2 credit) course. Successful completion of the Introduction to Homeopathy course with a score of 85% or better is accepted as a probationary admission, while pursuit of education towards an Associates Degree or equivalent, this allows the student the opportunity to enroll in the “Foundations of Hahnemannian Homeopathy” Course (HF102). Upon successful completion of HF 102 with a GPA of 85% the student is removed from probation and is matriculated into the Professional Homeopathic Practitioner Program.

Applications will not be processed unless all requirements are submitted together.

Denial of Application

If there is a denial of the application the Registrar will convene the Admissions Committee. The applicant will be notified of the Admissions Committee decision within 7 business days.

Applicants may submit requests regarding denied application or enrollment eligibility, denied ADA accommodations or other issues related to application or enrollment in writing to the BIH at: registrar@bihint.com within 5 business days of receipt of the decision.

A written appeal requests for reconsideration regarding eligibility, ADA accommodations, or other perceived issues must include the applicant’s name, address, a description of the specific issue or concern and the original letter of denial of application or enrollment.

Once an applicant has been accepted the next step is to complete the enrollment form for the program or course of choice. The enrollment form must include the following:

Enrollment/Registration

(Use Enrollment Form at www.bihint.com)

Payment in full of a non-refundable \$125.00 registration fee (enrollment form) will be required upon submission of completed and signed registration form. In addition to the registration fee, there is a \$200.00 Technology Fee.

“The mission of the British Institute of Homeopathy is to provide an outstanding classical homeopathic education to students and professionals, live and online, through distance education. ”

Student Status Guidelines

- Students must complete and submit all lesson work each week for the full time Professional Homeopathic Practitioner Program; for the part time PHPP, all lesson work every two weeks.
- Lesson work includes but is not limited to: discussions forums, assignments, quizzes, tests
- Students who have missed 20% of the course assignments and/or quizzes, without notification to their faculty or to the BIH will lapse into inactive status.

Signatures

E-mail transmission of photocopied or scanned documents containing student signature shall be for all intents and purposes considered as binding and enforceable as the original.

Proctored Examinations

All BIH examinations must be proctored by a neutral person at a professional organization such as a library, law firm, college/university, etc. A proctor cannot be a friend or relative and examinations may not be taken at a private residence. The student is responsible for locating and making arrangements with a suitable proctor, including proctoring fees, if any. All proctors and examination locations must be approved in advance by The British Institute of Homeopathy.. The student is required to send the proctor's name, organization and full contact details (including full address, phone number and e-mail address) to the BIH office at registrar@bihint.com. The Registrar will send authorization for the proctor to be used.

The Proctor is requested to submit a signed Proctor Statement together with the copy of the student's identification card and signed Student Declaration Letter after the examination is completed. Faculty must provide feedback to the student on the result of the examination as soon as the paperwork is evaluated.

Exams are taken less frequently throughout the course. The final exam covers the entire course, while the mid-term exam covers the first half of the course. Exams are subject to a three-hour time limit.

Grading System

Students will be graded on a numeric system only. No student is guaranteed a passing grade. The minimum passing grade for successful course completion is 80% for all courses in the Professional Homeopathic Practitioner Program. Probationary students must maintain a passing grade of 85% or better. The more proof a student shows of outside reading and independent research, the higher the grade awarded. Citation of sources must be formatted according to the APA Style and all reference sources must be included. Points are deducted for missing or incorrectly formatted citations.

"The mission of the British Institute of Homeopathy is to provide an outstanding classical homeopathic education to students and professionals, live and online, through distance education. "

Grading Criteria

Please note that a passing grade for students in all of the courses of study is 75%, except the PHPP, which is 80%.

100% to 80% is given when the correct answer is clearly and succinctly expressed, demonstrating wide reading of the textbooks and a thorough understanding of the subject, along with maturity and creativity. The student must comment critically on a subject or hypothesis stating his or her own views. Work graded in this range will include quotes from their required readings correctly cited with footnotes and a thorough bibliography properly formatted using the APA Style.

79% to 40% is given when the student expresses the answer mostly in his or her own words in sufficient detail. The answer must demonstrate that the student has read the accompanying textbooks to give a wider or more in-depth answer with perhaps quotations from other authors.

39% to 10% is given for answers of such brevity that the meaning is obscure. The answer demonstrates that the student does not fully understand the subject, or only a small part of the answer is given in the student's own words.

9% to 0% is given for incorrect answers, answers which are far too brief or a stra

Certificates of Completion

Students will be awarded a Certificate of Completion upon successful completion of the Professional Homeopathic Practitioner Program of study, and for elective courses. The Certificate of Completion will include the study hours completed with credit equivalent.

The certificates awarded by The British Institute of Homeopathy are credentials attesting to homeopathic or alternative therapy training and are separate from any legal requirements regarding licensing in any country. Each country has its own regulations and requirements to become a certified homeopath, qualified physician or licensed practitioner of any healing art. Students seeking to become licensed practitioners must meet all state and/or national requirements and follow the licensing procedure for the state and/or country in which they intend to practice.

Prior Studies in Homeopathy

An Advanced placement test is required by applicants with prior studies in Homeopathy to test their homeopathic knowledge in order to be considered for transfer credits to be awarded. The exam must be administered by a proctor and

"The mission of the British Institute of Homeopathy is to provide an outstanding classical homeopathic education to students and professionals, live and online, through distance education. "

The prerequisites are the following:

- The exam is taken in up to 3 hours
- All outside materials, including books, tablets, cell phones, or other material, written, electronic, digital or otherwise is not allowed.
- The Proctor cannot be a friend or relative and proctors and exam locations must be approved in advance by The British Institute of Homeopathy.
- The test includes subject areas in the BIH Foundations of Hahnemannian Homeopathy Course (HF 102), varies in format, includes multiple choice, fill-in the blanks with short answers and essays questions ranging from 100-500 word responses.
- Advanced Placement Exam Fee
 - A \$250* non-refundable examination fee is payable at time of application and can be submitted by
 - Credit card (preferred method) or
 - Check or bank money order drawn in U.S. dollars from U.S. bank and made payable to The British Institute of Homeopathy
 - PayPal – transfer money to BIH account: info@bihint.com

Note: *\$150.00 of the fee will be credited to the fees owed upon enrollment. Upon attaining a passing score of 85% the applicant will be awarded 13 credits equal to the Foundations of Hahnemannian Homeopathy (HF 102) course. If an applicant attains a score lower than 85%, he/she will not be awarded advanced standing in the Professional Homeopathic Practitioner Program and will be required to enroll in the full program or be allowed to take remediation lessons.

In certain cases, the BIH is willing to accept students who are pursuing undergraduate prerequisites as they are studying with the BIH in non-matriculated courses. Additionally, the BIH accepts individuals holding a BHMS or DHMS from other countries once the applicant has provided an equivalency transcript and letter from an organization such as Educational Credential Evaluators (ece.org) or World Educational Services (wes.org) is submitted with the application to the BIH Registrar.

ADA Accommodations

Compliance with the American with Disabilities Act of 1990 is accomplished through the BIH ADA Policy and Request for Reasonable Accommodation Form. Students with a documented disability must send a signed Request Form to the Registrar.

Payment

BIH offers various payment solutions for students. Payment can be done through credit card, cheques, direct deposits, and wire or bank transfers.

“The mission of the British Institute of Homeopathy is to provide an outstanding classical homeopathic education to students and professionals, live and online, through distance education.”

BIH provides installment plans for all courses except those which prices are \$1200 and below with a \$25.00 processing fee added to each installment payment. An initial forty percent (40%) payment of the assessed fee must be paid prior to the BIH allowing a student to begin coursework and a required nine (9) equal monthly installments payments for the remaining amount. Students are responsible for any of the fees incurred due to the following: \$50.00 Declined Card fee, \$50.00 Returned Check fee, bank transfer fee or 5% processing fee charged by Paypal, Transferwise or other online payment solutions over the total amount to be paid. All students are required to accept the Institute's Financial Responsibility Agreement prior to or upon enrollment. The agreement outlines the financial terms and conditions associated with course enrollment.

Enrollment will not be processed unless all requirements are satisfied and is not considered complete unless paid.

Once the completed and signed Enrollment Form and Student Agreement is received and verified, the Registrar will enroll the student in the appropriate course or program.

Enrolled students may begin coursework at the next scheduled commencement of a class following the approval of their application, enrollment and completion of the BIH student orientation, including the online learning management system tutorial. These requirements must be met prior to the course being opened for each student.

Upon successful enrollment students will be sent a welcome letter, the BIH Student Handbook, and an invitation to attend a required orientation to the Learning Management System used for classes. Questions regarding the assigned Faculty, payments or other concerns should be directed to the Registrar.

ight word-for-word copy of the BIH lesson text, even if such copies are correctly cited.

General Information

Integrity

All students, graduates and instructors of the Institute pledge to uphold the goodwill, integrity, reputation and teaching of The British Institute worldwide. All assignments and examinations submitted must be the student's own work. Quotations and material from other sources must be correctly cited using the APA Style format. Substantial penalties apply for proven instances of plagiarism, up to and including expulsion from The British Institute of Homeopathy International without refund.

"The mission of the British Institute of Homeopathy is to provide an outstanding classical homeopathic education to students and professionals, live and online, through distance education. "

Student Rights and Responsibilities

Code of Student Rights and Responsibilities are a set of guidelines to which students are held. Students must be familiar with these guidelines; not only does it have rules for students, it also describes student rights and has information on academic misconduct.

Students have the right to:

- Students are responsible for respecting all BIH staff, faculty, employees and classmates.
- Students are responsible for acting in a way that does not hinder, interfere with or impede the educational process.
- Students are responsible for completing all class tasks and assignments in a timely manner
- Students should feel free to express their opinions, feelings and ideas.
- Students also have the responsibility to work hard, to do their best, to complete assignments and to respect others' opinions, feelings and ideas.

It is the student's responsibility to:

- Remain current with classwork and assignments
- Submit lessons weekly (bi-weekly for part-time students)

Transcripts

All requests for proof of graduation or completion must be sent to the registrar@bihint.com including name, Student ID and mailing address. Students can request a copy of an official transcript, Letter of Completion, Certificates or re-issuance of these documents. Students who have completed their studies more than three (3) years prior must provide verifiable copies when requesting a re-issuance of transcripts, certificate, or UK Diploma. Requests for re-issuance of document is subject to applicable fee of \$50 per page plus cost of shipping. Copies of supporting documents such as registration paper, receipt of payment, paper work with grades and instructor's comments, or any documents that transcribed any of the following: date of registration, date of course completion, name of course enrolled, and name of instructor. Students unable to supply supporting documentation with their request will be subject to a fee of \$75.00 for processing that includes opportunity costs of time and energy for searching of records.

Intellectual Property

The British Institute of Homeopathy reserves the right to amend or update the content or syllabus of any course at any time. Course upgrade fees may be applied to students receiving updated course material. All course materials are provided for education purposes only. Any illustrations, examples and/or cases are for guidance only and are not intended to replace in any way whatsoever a detailed case taking and evaluation of the client and his/her specific complaint(s).

"The mission of the British Institute of Homeopathy is to provide an outstanding classical homeopathic education to students and professionals, live and online, through distance education."

Copyright

All rights reserved. BIH exercises its intellectual copyright over all BIH materials. All materials are copyrighted and may not be publicly displayed or copied in whole or part, nor reproduced, stored in a retrieval system, or transmitted in any form or by any means electronic, mechanical, photocopied, recorded or otherwise, except with the prior written authorization of The British Institute of Homeopathy.

Consistency of Study

The BIH is committed to providing our students with rigorous homeopathic courses and programs. Homeopathic students must demonstrate consistency and mastery of the materials. The Professional Homeopath Practitioner Program is subject to specific time frame requirements provided in the program description and are significantly more stringent than those required for non-matriculated students. Students must submit at least one lesson every week for the full time Professional Homeopathic Practitioner Program; for the part time Program, one lesson every two weeks. All courses must be completed by the mandatory completion date provided in the course description.

Inactivity

Students in elective courses must submit at least one lesson every two weeks and complete all of the course requirements prior to the maximum course completion date in order to remain on 'Active' status. Students who have lapsed into 'Inactive' status may inquire with the Registrar for possible reinstatement eligibility and terms. A lapse into 'Inactive' status does not stop or suspend scheduled payment installments, nor does such a lapse negate any balance due.

Leave/Extension

BIH may allow active students to take a short break from their studies or extend a deadline without lapsing into 'Inactive' status. Eligible students should contact registrar@bihint.com for details. Scheduled payments must be continued during a leave of absence.

Newsletters

Awards, scholarships, seminars and items of interest are announced in periodic newsletters. Please visit our website at www.bihint.com or e-mail info@bihint.com to subscribe to the newsletter.

Samuel Hahnemann Award

The Samuel Hahnemann Prize is awarded to students who distinguish themselves by demonstrating outstanding academic achievement and reaching the highest level of educational excellence. The recipients are selected from the most promising students nominated by the British Institute of Homeopathy International faculty and staff.

"The mission of the British Institute of Homeopathy is to provide an outstanding classical homeopathic education to students and professionals, live and online, through distance education."

Student Grievances

Students who have a grievance must notify the Registrar in writing with full details of their circumstances. Any student accused of violating the Code of Student Conduct should have the right to expect consistent and fair procedures for resolving their situation, all student-based decisions made by BIH Administrators and/or the Academic Leadership Committee, may be appealed to the Appeals Committee, which is the final authority in these procedures.

Students are responsible for knowing and obeying BIH rules, as well as local, state and federal laws. A student who violates these rules will be subject to potential sanctions which may result in suspension from BIH.

Updates

Periodic announcements and updates are posted online on our website at www.bihint.com. It is the student's responsibility to check this site frequently and to keep abreast of all updates.

Tuition Refund Policy

Refund requests must be submitted in writing with a detailed explanation of the reason for withdrawal from the course and will be subject to approval by the Registrar or the Academic Leadership Committee.

A full refund of the tuition portion of the amount paid, after fees and non-refundable charges have been deducted, is available upon written request within three business (3) days of the date on the signed registration agreement. Beyond this initial three-day period, a pro-rated refund may be granted, subject to the following conditions:

- Administrative fees, including application, registration, insurance and Technology fees, are not refundable.
- Refunds may take 30-45 days for processing.
- Refunded amounts are subject to a 10% processing fee.
- Refunds are based on the applicable prices and fees at the time of registration; if a discounted price was given for a course, the refund will be minus the amount it would have been for the original course price.
- Approved refunds of the remaining paid amount after all fees and non-refundable charges have been deducted will be prorated according to the elapsed time since the date on the signed registration agreement:
 - 6-30 days: 50% refundable
 - 31-60 days: 25% refundable
- No refund will be approved if more than 60 days have elapsed since the date of beginning the course

"The mission of the British Institute of Homeopathy is to provide an outstanding classical homeopathic education to students and professionals, live and online, through distance education. "

Courses of Study

HF101 - Introduction to Homeopathy

Prerequisite: High School Diploma or Equivalent

Duration: 30 study hours

Maximum Time to Complete: 2-6 months

Description: The Introduction to Homeopathy course is specifically designed as a distance learning course to introduce people everywhere to homeopathic practices. The objective of this course is to provide basic education on the basics of homeopathy including first aid treatment. This course is a precursor to study a specialized field of homeopathy such as veterinary or dental homeopathy. The Introduction to Homeopathy is the basic requirement to continue to the Foundations-level courses with a goal of becoming a Certified Homeopathic Practitioner. This course covers nearly 100 of the most commonly used remedies and includes a 100-page Materia Medica.

Content: History of Homeopathy - Basic Principles, Hering's Law of Cure, The Nature of Remedies, Principles and Concepts I & II, Meet the Remedies, Homeopathic Support Therapy, Homeopathic First Aid Treatment

HF101A – Clinical Homeopathy for Healthcare Professionals

Prerequisite: Government-Issued Health Professional Licensed or Certification

Duration: 40 study hours

Maximum Time to Complete: 2-6 months

Description: Homeopathy 101 A – Introduction to Homeopathy for Healthcare Professionals was created for the medical professionals who are interested in the practice of Homeopathic Medicine and want to incorporate the ability to use homeopathic medicines in their practice. In Arizona this course has been endorsed by the Arizona Homeopathic and Integrative Medicine Association (AHIMA) as fulfilling the requirements for training in Homeopathic Medicine required for licensure by the Arizona Board of Homeopathic and Integrated Medicine Examiners. This course is also approved for 40 CME hours for MDs.

Content: The British Institute's Introduction to Homeopathy for Healthcare Professionals offers a more extensive foundation of knowledge that will empower the practitioner with enough information to safely and effectively use homeopathic medicine for common day to day discomforts, accidents and illnesses most likely to be seen in daily practice. This Introductory Course covers more than 100 remedies in Materia Medica for acute conditions with their common indications. This course also includes the history and the fundamental principles of homeopathy, preparation and dosing methods, as well as additional lessons in Bach Flower Therapy, and Biochemical Tissue Salts. Students will learn about the holistic view of illness, the Direction of Cure, Hahnemann's Organon and how to repertorize symptoms and choose the most indicated remedy for the patient.

"The mission of the British Institute of Homeopathy is to provide an outstanding classical homeopathic education to students and professionals, live and online, through distance education."

HF102 - Foundations of Hahnemannian Homeopathy

Prerequisite: Associates Degree or Equivalent

Duration: 200 study hours

Maximum Time to Complete: 9-18 months

Description: This course covers all the essential concepts in Homeopathy according to the doctrines of Samuel Hahnemann. The student will understand how a homeopath views disease, how we map out a disease (symptom hierarchy), the basic principles of homeopathy, an introduction to the Materia Medica and more. Our in-depth Foundations course covers material in greater detail than the introductory course and establishes a firm foundation for the more advanced courses which follow it, such as Homeopathy In Practice (HiP), Clinical Training (offered in person and remotely via interactive webcast) or the Advanced Studies in Homeopathy graduate-level course. The Foundations course consists of 30 lessons that include: 29 discussions, 14 quizzes and 13 assignments, with two proctored examinations,

Content: History and Development of Homeopathy; Philosophy and Principles; Materia Medica; Homeopathic Pharmacy; Homeopathic Treatment of Common Ailments; Introduction to Anatomy & Physiology; Modalities; Theory of Miasms; Pathology; Potencies in Prescribing; Nosodes, Isodes and Sarcodes; Introduction to Case Taking and Repertorization; Homeopathic Therapeutics; Biotherapies; Case Studies; Research in Homeopathy; Computerized Homeopathy; Acute and Chronic Diseases; Constitutional Prescribing.

HIP201 - Homeopathy in Practice (Advanced Case Taking & Repertorization)

Prerequisite: Any BIH Foundations-level course or equivalent studies with proctored placement exam

Duration: 100 study hours

Maximum Time to Complete: 6 months

Description: This course is essential for anyone planning to practice professionally. HIP provides a detailed study of all necessary skills and tools to analyze and manage cases for an eventual practice, from the client interview through clinical observation, repertorization, remedy selection and follow-ups. The course consists of 9 Lessons, 9 discussions and 8 written assignments with one proctored examination. The course requires submission of 3 cases and case studies.

It is highly recommended that Homeopathy in Practice be combined with Clinical Training (CT202).

Please note that students requesting enrollment in clinical studies with prior studies at other institutions wishing to pursue Advanced Studies may be required to successfully complete a proctored placement examination. Proof of prior studies must also be submitted to the office before registering for the exam or clinical

“The mission of the British Institute of Homeopathy is to provide an outstanding classical homeopathic education to students and professionals, live and online, through distance education.”

training. For further information and fees, please contact the office at 800-498-6323 or registrar@bihint.com.

Content: Taking the Case, Case Assessments, Symptomatology, Constitution, Etiology, Miasms, Drainage and Organ Support Remedies, Bowel Nosodes, Groups and Families, Examining Patients, Structure and Logic of Kent's Repertory, Using the Repertory, Translating Symptoms into Rubrics, Evaluating Repertorization, Repertory Exercises, Computerized Repertorization, Case Studies, Case Management, How to Gain the Most from Clinical Observation, Guidelines for Setting up Your Own Practice, Materia Medica of Lesser Known Remedies, Writing Up Case Presentations.

CT202 - Clinical Training in Homeopathy

Prerequisite: Foundations of Hahnemannian Homeopathy (HF102) or equivalent studies

Duration: Six sessions (weekends) per year; Live or via Online Webinar, plus supervision of 10 personal cases over two years.

Description: The BIH Clinical Training in Homeopathy course is designed to help the student meet certification requirements. Students may participate live in our NJ office or online via real-time, interactive webinar. Clinical hour requirements can be met partially or entirely through the BIH programs.

Clinical Training consists of Observation and Case Supervision with live patients and real cases held in real time through Zoom. Each case is supervised by Certified Homeopaths. Students are required to observe and participate in actual intakes and follow-ups with real clients, along with participating in case discussion, repertorization and remedy selection. Advanced students may take and manage cases under certified homeopath supervision. Clinical Training clinics are held on Saturday and Sunday, six (6) weekends per year, for a total of approximately 16 hours per clinic, with a two-hour follow up discussion one to two weeks after each clinic. Each clinic features two new clients and several follow up visits from clients featured in previous clinics.

The scheduled clinics provide approximately 100 Clinical Observation hours per year, though the student can earn additional clinical hours by submitting written case analyses for feedback from the certified supervising homeopathy.

Clinics are held in the months of January, March, May, July, September and November. For clinic dates and details, please contact the main office at registrar@bihint.com or by calling our office toll free at 800-498-6323.

Requirements for CHC Certification: The Council for Homeopathic Certification (CHC) currently requires 250 hours of clinical observation and 250 hours of supervised case taking and analysis as prerequisites for the certification exam. Clinical hours must include: case taking, case analysis, case management, client management, posology and homeopathic pharmacy. Please see the CHC website

"The mission of the British Institute of Homeopathy is to provide an outstanding classical homeopathic education to students and professionals, live and online, through distance education."

at <http://www.homeopathicdirectory.com/> for updates to the exact requirements for certification.

HAH301 - Advanced Studies in Homeopathy

Prerequisite: Any BIH Foundations-level course or equivalent studies with proctored placement exam

Duration (including Thesis): 250 study hours

Maximum Time to Complete: 9-18 months

Description: The Advanced Studies Course will elevate homeopaths to higher standards of achievement and produce mature, confident practitioners who will play leading roles in the future of homeopathy as authors, teachers, researchers and administrators. Advanced Studies in Homeopathy offers a multi-faceted approach designed to develop the creativity of the student. Many British Institute graduates who have completed this advanced curriculum are now conducting research programs, have written books and are recognized as leading lecturers as well as running successful practices. The course consists of 30 lessons that include: 29 discussions, 14 quizzes and 13 assignments, with two proctored examinations,

Content: Samuel Hahnemann and Medical Reform, Women in Homeopathy, Provings, Newer Aspects of Homeopathy, Lesser Known Polychrests, Constitutional Repertory, Homeopathy and Nutrition, Doctrine of Signatures, LM Potencies, Practical Homeopathic Pharmacy, Homeopathic Prognosis, Mother Tinctures, Tissue Salts, Drainage Therapy, Potency Prescribing and Frequency of Dosing, Biochemic Nutritional Remedies, Homeopathic Research, Suppression and Palliation, Case Studies, Book Review, Development of Homeopathy Worldwide.

HP101 – Fundamentals of Homeopathic Pharmacy

Prerequisite: High School Diploma or Equivalent

Duration: 80 study hours

Maximum Time to Complete: 8 months

Description: This introductory course is designed to give pharmacists, technicians and their assistants a working knowledge of homeopathic remedies for common ailments for advice and information in over-the-counter recommendations. The course consists of 10 lessons and one proctored examination. Graduates of this course may continue their studies with the Foundations of Homeopathic Pharmacy (HP102) and may also be eligible for price reduction. Please contact the main office for details.

Content: Sources and Preparation of Homeopathic Remedies, History of Homeopathic Pharmacy, Quality of Homeopathic Medicines, Philosophy and Principles of Homeopathy, Homeopathic Treatment for Common Ailments, Modalities, Introduction to Anatomy & Physiology

“The mission of the British Institute of Homeopathy is to provide an outstanding classical homeopathic education to students and professionals, live and online, through distance education.”

HP102 - Foundations of Homeopathic Pharmacy
(Includes Course HP101)

Prerequisite: Some regions require students to be a licensed Pharmacist to take this course. Please send credentials upon registration or contact the main office for details.

Prerequisite: Associates Degree or Equivalent

Duration: 200 study hours

Maximum Time to Complete: 9-18 months

Description: Foundations of Homeopathic Pharmacy is designed specifically to meet the needs of both the beginner interested in homeopathic pharmacy as well as qualified pharmacists at every level of involvement with homeopathy in their practices, from stocking a limited range of proprietaries to full dispensing and practitioner service. The rewards lie in increased turnover and profitability and the professional satisfaction often denied to the pharmacist with conventional drugs.

This course includes the Fundamentals of Homeopathic Pharmacy course (HP101). The material covered by this course is similar to the Foundations of Hahnemannian Homeopathy course (HF102), but with greater emphasis on the pharmaceutical aspects of homeopathy. This course consists consists of 30 lessons that include: 29 discussions, 14 quizzes and 13 assignments, with two proctored examinations,

For those students who want to practice homeopathy professionally are advised to follow this course with Homeopathy in Practice (HIP201), Clinical Training (HIP202) and Advanced Studies in Homeopathy (HAH301). This course contains a practical lesson for which supplies will be required.

Content: History and Development of Homeopathy; Homeopathic Pharmacy; Philosophy and Principles of Homeopathy; Constitution; Modalities; Introduction to Homeopathic Medicines; Homeopathic Treatment for Common Ailments; Introduction to Anatomy & Physiology; Theory of Miasms; Potencies in Prescribing; Materia Medica; Nosodes, Isodes and Sarcodes; Biotherapies; Homeotherapeutics; Introduction to Repertorizing and Case Taking; Homeopathic Prescribing for Dental Conditions; Research in Homeopathy; Computerized Homeopathy; Periodontal Diseases; Painful Conditions Presenting as Emergencies; Disease and Simple Restorations; Fillings; Crowns; Overlays; Prosthodontics; Dental Fillings and Toxicity.

Content: In-depth study of Sources and Preparation of Homeopathic Remedies, History of Homeopathic Pharmacy, Quality of Homeopathic Medicines, Philosophy and Principles of Homeopathy, Homeopathic Treatment for Common Ailments, Modalities, Introduction to Anatomy & Physiology; History and Development of Homeopathy; Materia Medica; Modalities; Theory of Miasms; Pathology; Potencies in Prescribing; Nosodes, Isodes and Sarcodes; Introduction to Case Taking and Repertorization; Homeopathic Therapeutics; Biotherapies; Case Studies; Research in Homeopathy; Computerized Homeopathy; Acute and Chronic Diseases; Constitutional Prescribing; Formulations; Storage and Care of Homeopathic

“The mission of the British Institute of Homeopathy is to provide an outstanding classical homeopathic education to students and professionals, live and online, through distance education.”

Medicines; International Homeopathic Pharmacopoeias; Proprietary Homeopathic Medicines; Trituration; Nomenclature; Avogadro Limit in Potencies

HV101 – Fundamentals of Veterinary Homeopathy

Prerequisite: High School Diploma or Equivalent

Duration: 80 study hours

Maximum Time to Complete: 8 months

Description: Fundamentals of Veterinary Homeopathy is the ideal course for pet owners and veterinary assistants as well as anyone interested in homeopathic care of domestic animals. This course covers the theory of homeopathy, animal first-aid and the home treatment of domestic pets including dogs, cats, rabbits and birds. The course consists of 10 lessons and one proctored examination. Graduates of this course may continue their studies with Foundations of Veterinary Homeopathy (HV102) may be eligible for price reduction. Please contact the main office for details.

Content: Introduction to Veterinary Homeopathy, Principles of Homeopathy, the Role of the Veterinarian, Sources and Preparation of Homeopathic Medicines, Animal Doses and Administration, Common Remedies Used in the Treatment of Animals, First Aid for Pets and Small Animals, Animal Home Treatment Case Studies, Guide to Veterinary Organizations and Homeopathic Veterinarians.

HV102 - Foundations of Veterinary Homeopathy (Includes Course HV101)

Prerequisite: Some regions require students to be a licensed Veterinarian to take this course. Please send credentials upon registration or contact the main office for further details.

Prerequisite: Associates Degree or Equivalent

Duration: 200 study hours

Maximum Time to Complete: 9-18 months

Description: Foundations of Veterinary Homeopathy is recommended for veterinarians and veterinary surgeons as well as farm managers, cattlemen and anyone who cares for livestock or domestic animals including cattle, sheep, pigs, horses, ostriches, cats, rabbits, birds, poultry and small animals. This course includes the Fundamentals of Veterinary Homeopathy course (HV101). The material covered by this course is similar to the Foundations of Hahnemannian Homeopathy (HF102), but with greater emphasis on the treatment of farm, performance and domestic animals. The course consists of 29 lessons and three proctored examinations as well as a practical lesson for which supplies will be required. A Clinical Repertory for Animal Rubrics is included.

“The mission of the British Institute of Homeopathy is to provide an outstanding classical homeopathic education to students and professionals, live and online, through distance education.”

For students who are planning to practice homeopathy professionally are advised to follow this course with Homeopathy in Practice (HIP201), Clinical Training (HIP202) and Advanced Studies in Homeopathy (HAH301).

Content: Introduction to Veterinary Homeopathy, Principles of Homeopathy, the Role of the Veterinarian, Sources and Preparation of Homeopathic Medicines, Animal Doses and Administration, Common Remedies Used in the Treatment of Animals, First Aid for Pets and Small Animals, Animal Home Treatment Case Studies, Guide to Veterinary Organizations and Homeopathic Veterinarians, Constitutional Prescribing in Veterinary Homeopathy, Advanced Homeopathic Treatment of Animals, Homeopathy and Animal nutrition, Animal Case Taking, Research in Veterinary Homeopathy, Legal Aspects of Animal Treatment, Clinical Repertory.

This course consists consists of 30 lessons that include: 29 discussions, 14 quizzes and 13 assignments, with two proctored examinations,

For those students who want to practice homeopathy professionally are advised to follow this course with Homeopathy in Practice (HIP201), Clinical Training (HIP202) and Advanced Studies in Homeopathy (HAH301). This course contains a practical lesson for which supplies will be required.

Content: History and Development of Homeopathy; Homeopathic Pharmacy; Philosophy and Principles of Homeopathy; Constitution; Modalities; Introduction to Homeopathic Medicines; Homeopathic Treatment for Common Ailments; Introduction to Anatomy & Physiology; Theory of Miasms; Potencies in Prescribing; Materia Medica; Nosodes, Isodes and Sarcodes; Biotherapies; Homeotherapeutics; Introduction to Repertorizing and Case Taking; Homeopathic Prescribing for Dental Conditions; Research in Homeopathy; Computerized Homeopathy; Periodontal Diseases; Painful Conditions Presenting as Emergencies; Disease and Simple Restorations; Fillings; Crowns; Overlays; Prosthodontics; Dental Fillings and Toxicity.

HD101 - Foundations of Dental Homeopathy

Prerequisite: Some regions require students to be a licensed Dentist or Dental Surgeon to take this course. Please send credentials upon registration or contact the main office for further details.

Prerequisite: Associates Degree or Equivalent

Duration: 200 study hours

Maximum Time to Complete: 9-18 months

Description: A unique and comprehensive course for dentists and dental surgeons in the theory and practice of homeopathic medicine and the treatment of all dental conditions, along with training in the preparation and dispensing of homeopathic medicines. This course consists consists of 30 lessons that include: 29 discussions, 14 quizzes and 13 assignments, with two proctored examinations,

“The mission of the British Institute of Homeopathy is to provide an outstanding classical homeopathic education to students and professionals, live and online, through distance education.”

For those students who want to practice homeopathy professionally are advised to follow this course with Homeopathy in Practice (HIP201), Clinical Training (HIP202) and Advanced Studies in Homeopathy (HAH301). This course contains a practical lesson for which supplies will be required.

Content: History and Development of Homeopathy; Homeopathic Pharmacy; Philosophy and Principles of Homeopathy; Constitution; Modalities; Introduction to Homeopathic Medicines; Homeopathic Treatment for Common Ailments; Introduction to Anatomy & Physiology; Theory of Miasms; Potencies in Prescribing; Materia Medica; Nosodes, Isodes and Sarcodes; Biotherapies; Homeotherapeutics; Introduction to Repertorizing and Case Taking; Homeopathic Prescribing for Dental Conditions; Research in Homeopathy; Computerized Homeopathy; Periodontal Diseases; Painful Conditions Presenting as Emergencies; Disease and Simple Restorations; Fillings; Crowns; Overlays; Prosthodontics; Dental Fillings and Toxicity.

HW201 - Women's Health Module I (Midwives) (Pregnancy-Childbirth)

Prerequisite: Foundations of Hahnemannian Homeopathy (HF102) or proof of equivalent studies

Duration: 80 study hours

Maximum Time to Complete: 8 months

Description: This course covers conception to post-partum, including the homeopathic approach to pregnancy, childbirth and care of the newborn. The course consists of five lessons and one proctored examination. It is the first of the three modules which make up the Comprehensive Studies in Women's Health and Homeopathy Course (HW202). Tuition for this course may be credited toward purchase of the Comprehensive Studies in Women's Health and Homeopathy course (HW202) should the student wish to continue on after this first module has been completed.

Content: 'A Healthy Pregnancy' includes nutrition, tissue salt program and homeopathic remedies for morning sickness. 'Sustaining the Pregnancy' includes miscarriage or termination if necessary. 'Second and Third Trimester' includes varicosity, constipation and backache, pre-eclampsia, false and premature labor. 'Birthing the Baby' includes preparing for labor, Cesarean birth, the basic birthing kit and stages of labor. 'The Post-Partum' includes breastfeeding, postnatal depression and renewal of cycles. 'The Newborn' includes asphyxiation, birth trauma, vomiting and colic.

"The mission of the British Institute of Homeopathy is to provide an outstanding classical homeopathic education to students and professionals, live and online, through distance education."

HW202 – Comprehensive Studies in Women’s Health & Homeopathy
(Includes Course HW201)

Prerequisite: Foundations of Hahnemannian Homeopathy (HF102) or proof of equivalent studies

Duration: 220 study hours

Maximum Time to Complete: 18 months (1.5 years)

Description: This course consists of three complete modules: Midwives, Childhood and Adolescence and Adulthood to Maturity constitute a comprehensive course in women’s health from conception to old age. The Midwives Module covered in Course HW201 is included. The course consists of 15 lessons (including the eight midwives lessons) and three proctored examinations.

Content:

Module I: A Healthy Pregnancy, Sustaining the Pregnancy, Second and Third Trimester, Birthing the Baby, The Post-Partum, The Newborn.

Module II: Becoming a Woman – Menarche and Menstruation; Little Ones; Becoming a Mother; Vaccination, Vaccinosis and Alternatives; Surviving Childhood Abuse.

Module III: Distressed Eating Patterns and Addictions; Sexuality; Healthy Fertility; Pausing Menopause; Growing Older; Grief and Death.

HRB101 - Foundations of Herbology and Herbal Medicine

Prerequisite: High School Diploma or Equivalent Duration: 220 study hours

Maximum Time to Complete: 18 months (1.5 years)

Description: Plants and other naturally occurring products have historically provided the backbone of our medicine sources. Foundations of Herbology and Herbal Medicine provides a comprehensive study of herbs and their medicinal uses through the ages as well as in modern times. This course includes 12 lessons and two proctored examinations.

Content: History of Herbal Medicine, Modern Herbalism, Chemical and Botanical Classification, Phytomedicines, Terminology, Herbal Therapeutics, Publications and Referencing, Evidence-Based Practice, Review of Clinical Trials, Complementary Therapies, Interactions and Dose Adjustments, Herbal Contraindications, Botanical Cross References.

“The mission of the British Institute of Homeopathy is to provide an outstanding classical homeopathic education to students and professionals, live and online, through distance education.”

NH101 - Nutrition and Herbology
(Includes Course NUT101)

Prerequisite: High School Diploma or Equivalent
Duration: 75 study hours
Maximum Time to Complete: 8 months

Description: This course provides general training in modern nutritional therapy, recognizing it as complementary to and in many respects an intrinsic part of, all complementary therapies. The course also provides general training in herbal medicines which, like nutritional supplements, are now widely available along with homeopathic medicines. The course consists of 10 lessons and one proctored examination and includes all of the information in Introduction to Nutrition (NUT101).

Content: The Macronutrients; Digestion and Gastrointestinal Disorders; Micronutrients; Vitamins, Minerals and the Trace Elements; Principles of Healthy Eating; Environmental Toxins and the Food Chain; Diet and Disease; Diet, Inflammation and Aging; Herbal Medicine.

CN302 - Foundations of Clinical Nutrition

Prerequisite: An understanding of nutrition is desirable, but not essential.
Duration: 500 study hours
Maximum Time to Complete: 24 months (2 years)

Description: Clinical Nutrition course is not a course in dietary nutrition. Clinical Nutrition relies on clinical test results to determine nutrition needs based on the patient's pathology. The course addressed two areas: (1) the nutrients needed to help the patient return to full function, and (2) the nutrients needed to repair the damaged tissue. This course is comprehensive, yet it is taken step by step. It reminds the student of the pathways and the metabolites needed for full function as well as discusses certain deficiency states and how they can be addressed. This course consists of 12 modules and two proctored examinations.

The course has been created in collaboration with The American Council of Applied Clinical Nutrition. The Council will provide certification to all students successfully completing the course as Fellows of the American Council of Applied Clinical Nutrition, permitting the use of letters FACACN.

Content: Nutritional Biochemistry, Protoplasm and Tissues, Carbohydrates and Lipids, Proteins and Amino Acids, Biochemistry of Digestion, Clinical Endocrinology, Nutrients of Life, Metabolic Pathways, Water Soluble Vitamins, Oil Soluble Vitamins, Macrominerals and Microminerals, Nutritional Laboratory Diagnosis, Interpretation of Contemporary Laboratory Tests, Nutritional

"The mission of the British Institute of Homeopathy is to provide an outstanding classical homeopathic education to students and professionals, live and online, through distance education."

Deficiencies, Abnormal Laboratory Values, Specific Laboratory Panels, Blood Electrolytes, Nutritional Recommendations, Biochemic Tissue Salts

NUT101 – Introduction to Nutrition

Prerequisite: High School Diploma or Equivalent

Duration: 25 study hours

Maximum Time to Complete: 8 months

Description: This course covers the fundamentals of modern nutrition and nutritional therapies. It provides basic training for a Nutritionist and is an ideal supplement for practitioners of other therapies. The course consists of seven lessons and one proctored examination.

Content: The Macronutrients; Digestion and Gastrointestinal Disorders; Micronutrients; Vitamins, Minerals and the Trace Elements; Principles of Healthy Eating; Environmental Toxins and the Food Chain; Diet and Disease; Diet, Inflammation and Aging.

Please note that NUT101 is the first section of NH101 and NBR201.

NBR201 - Fundamentals of Nutrition & Biochemic Remedies

(Includes Course NUT101)

Prerequisite: High School Diploma or Equivalent Duration: 150 study hours

Maximum Time to Complete: 18 months (1.5 years)

Description: Nutrition is an essential adjunct to the holistic application of homeopathic care. Biochemic Remedies have been found to be vital to proper cell, tissue, and organ metabolism and can be used concurrently with homeopathic treatment. This course consists of 14 lessons with two proctored examinations as well as all of the information in Introduction to Nutrition (NUT101). It also includes a bonus section encompassing the newest Biochemic Remedies used today.

Content: The Macronutrients; Digestion and Gastrointestinal Disorders; Micronutrients; Vitamins, Minerals and the Trace Elements; Principles of Healthy Eating; Environmental Toxins and the Food Chain; Diet and Disease; Diet, Inflammation and Aging; Diet and Nutritional Supplements; Essential Vitamins and Minerals; Toxic Metals and Minerals; Biochemic Tissue Salts; Nutrition and Homeopathy; New Biochemic Remedies

“The mission of the British Institute of Homeopathy is to provide an outstanding classical homeopathic education to students and professionals, live and online, through distance education.”

AP201 – Human Anatomy and Physiology

Prerequisite: High School Diploma or Equivalent

Duration: 100 study hours/7 credits

Maximum Time to Complete: 9-18 months

Description: The British Institute recognizes the importance of a firm understanding in the medical sciences for all natural health practitioners. This course is designed to support and enhance homeopathic studies and practice or courses in practice of other complementary therapies such as Nutrition, Herbology, Bach Flower Essences or Gemmotherapy. Anatomy & Physiology consists of 30 lessons and one proctored examination. The material may be studied concurrently with other courses of the Institute.

Content: Cells, Tissue, Skin, Bones, Joints, Blood, Chemistry, Senses, Neural Integration, the Systems of the Body: Skeletal, Muscular, Digestive, Nervous, Endocrine, Cardiovascular, Respiratory, Immune, Genito-Urinary, Reproductive, Lymphatic.

AP202 – Human Pathology and the Nature of Disease

Prerequisite: Human Anatomy and Physiology (AP201) or proof of equivalent studies

Duration: 100 study hours

Maximum Time to Complete: 9-18 months

Description: Pathology is the study of disease in a systematic manner. This course is concerned with the cause of disease, the course of disease, its diagnostic signs and symptoms and biochemical changes and complications which may occur with the disease. It also looks at the homeopathic view of the nature of 'dis-ease'. The course consists of 14 lessons and a final examination consists of a research and a proctored examination.

Content: Introduction to Pathology and Homeopathy, Cause and Prevention of Disease, Immunological Disorders, Genetic Diseases, Hahnemann's Concept of Disease, Human Environmental Interaction, Miasms, Genetics, Immune System and Immune Diseases, Nutrition, Infections, Environmental and Occupational Disease, Allergies, Degenerative Diseases, Cancer and AIDS, Stress-Related and Mental Disorders, Epidemiology, Diseases of Children, Diseases of Women and Illness Related to Aging

"The mission of the British Institute of Homeopathy is to provide an outstanding classical homeopathic education to students and professionals, live and online, through distance education."

FES101 – Bach Flower Practitioner Course

Prerequisite: High School Diploma or Equivalent

Duration: 150 study hours

Maximum Time to Complete: 18 months (1.5 years)

Description: This is an authoritative course wholly encompassing the history, theory and therapeutic application of the Bach Flower Remedies to practitioner level and viewing them in the larger context of complementary medicine. Veterinary application of Bach Flower Therapy is a unique feature of the course. This course consists of 14 lessons with two proctored examinations.

Content: Bach Flower Therapy in theory and Practice, Discovery and Basic Healing Principle, Materia Medica, Presentation of the 38 Remedies by Actual Case Example, Correlation with Homeopathy, Application of Bach Flower Therapy as an Integral Part of Modern Medicine, Application in Special Conditions, Indication and Therapeutic Applications, Veterinary Applications, Seminar Text: “Four Ways to Heal”, Preparation of Remedies, Botanical Descriptions

GEM201 - Gemmotherapy

Prerequisite: High School Diploma or Equivalent

Duration: 100 study hours

Maximum Time to Complete: 12 months (1 year)

Description: Gemmotherapy is the study of the medicinal use of extracts from buds from plants either in potentized form (Homeopathy) or in concentrated form. This technique is widely used in Belgium and France, where conventional practitioners are using the method as well. The ease of use, safety and wide indications makes this technique an individual tool for any type of health practitioner, no matter which modality is primarily used.

Content: History, Philosophy and Principles; Basic Characteristics and Therapeutic Uses of Specific Remedies, Materia Medica and Repertory of Gemmotherapy Remedies

“The mission of the British Institute of Homeopathy is to provide an outstanding classical homeopathic education to students and professionals, live and online, through distance education.”

FERPA Law

The Family Educational Rights and Privacy Act (**FERPA**) is a federal law that affords parents the right to have access to their children's education records. When a student turns 18 years old, or enters a postsecondary institution at any age, the rights under FERPA transfer from the parents to the student ("eligible student"). The FERPA statute is found at 20 U.S.C. § 1232g and the FERPA regulations are found at 34 CFR Part 99.

Reference Request and FERPA Release

Students Applying to The British Institute of Homeopathy (BIH) from a previous educational institution.

I permit the Registrar from BIH to obtain reference information about my scholastic (academic and personal) performance for the purpose(s) of admission to the BIH (The British Institute of Homeopathy).

The reference(s) may be given orally and/or in writing.

I hereby, authorize the release of information and an evaluation about any and all information from my education records at _____ (Name of previously attended School), including information pertaining to my education at other institutions I have previously attended that is part of my education record at the other Homeopathic School(s), deemed necessary by the BIH Registrar to provide the reference.

I understand further that: (a) I have the right not to consent to the release of my education records; (b) I have a right to receive a copy of any written reference upon request; (c) and that this consent shall remain in effect until revoked by me, in writing, and delivered to the Registrar from the BIH but that any such revocation shall not affect disclosures previously made by the BIH prior to the receipt of any such written revocation.

Student Name (printed): _____

Student Signature: _____ **Date:** _____

"The mission of the British Institute of Homeopathy is to provide an outstanding classical homeopathic education to students and professionals, live and online, through distance education. "

Contact Information

The British Institute of Homeopathy International
580 Zion Road Egg Harbor Township
New Jersey, U.S.A. 08234

Telephone: 1-609-927-5660

Toll Free: 1-800-498-6323

Fax No.: 1-609-653-1289

Website: www.bihint.com

Facebook: <https://www.facebook.com/bihusa/>

Course and Program Inquiry: registrar@bihint.com

Other Inquiry: info@bihint.com

Office Hours: Monday – Thursday 9:00 AM – 5:00 PM Eastern Time

“The mission of the British Institute of Homeopathy is to provide an outstanding classical homeopathic education to students and professionals, live and online, through distance education.”
